
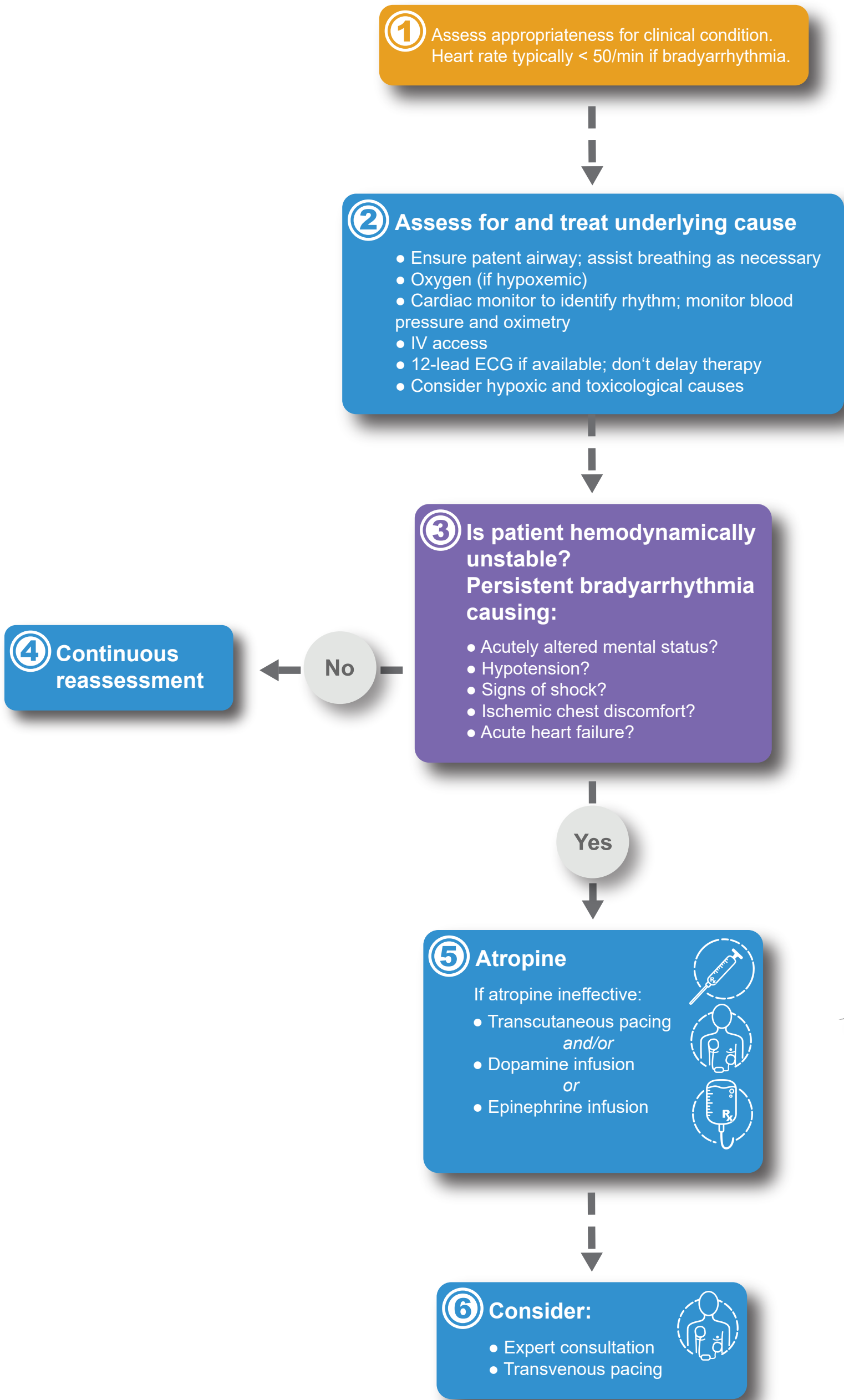


Adult Bradycardia with a Pulse Algorithm

Further Your Knowledge! 

All links connect to videos, articles, quizzes or other materials to enhance your learning experience.



Consider Possible Causes

- Infarction/myocardial Ischemia
- Drugs/toxicologic
- Beta-blockers, calcium channel blockers, digoxin
- Hypoxia
- Electrolyte disturbances e.g., hyperkalemia

Medication Dose/Details

Atropine IV dose:
First dose: 1 mg bolus. Repeat every 3–5 minutes. Maximum: 3 mg.

Dopamine IV dose:
Usual infusion rate is 5–20 mcg/kg/min. Titrate to patient response; taper slowly.

Epinephrine IV dose:
2–10 mcg/min infusion. Titrate to patient response.